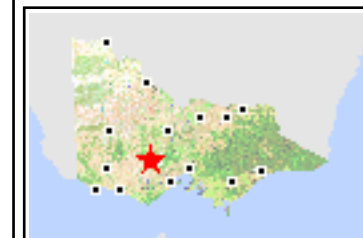
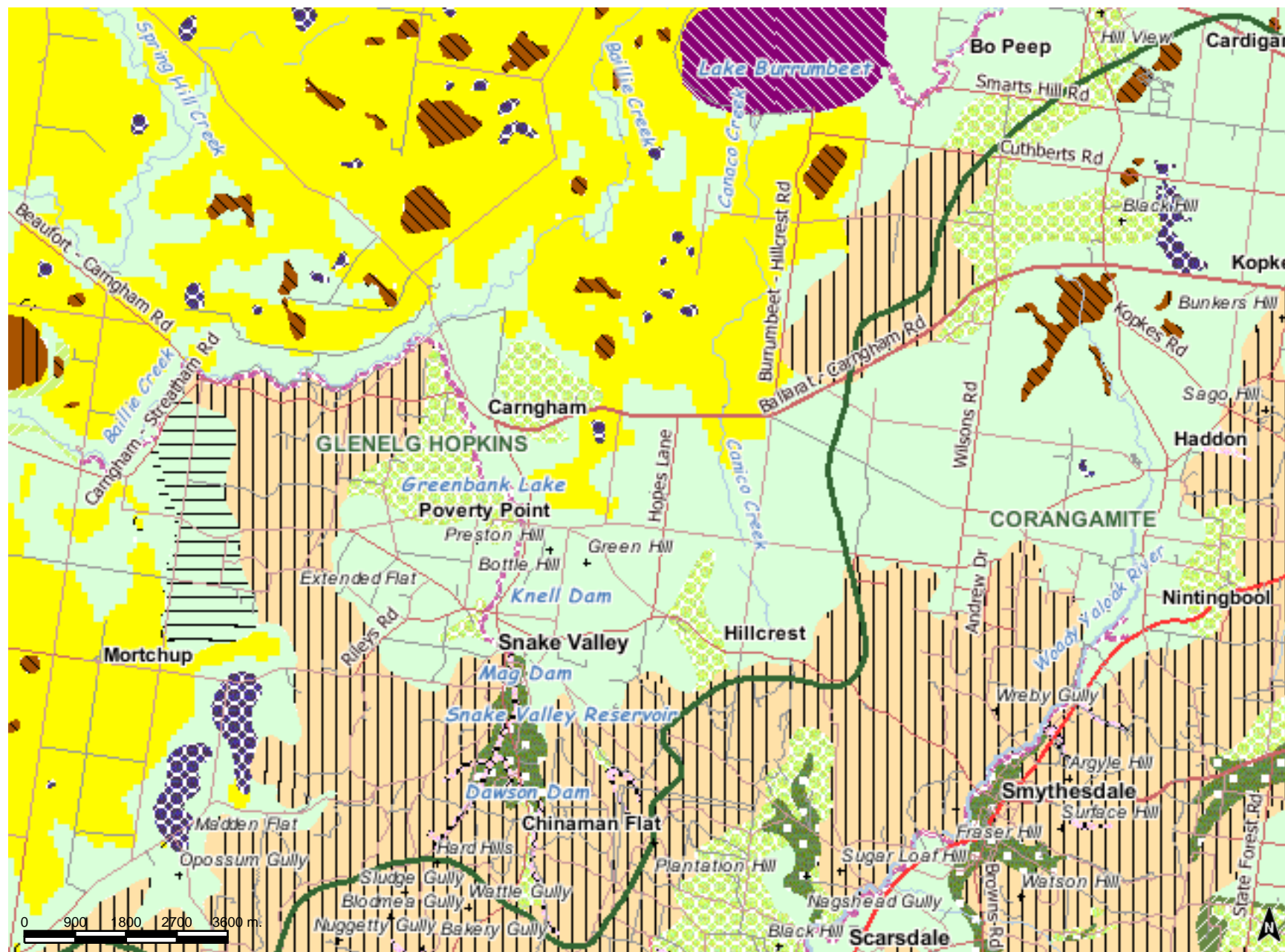


Pre 1750 EVC groups Snake Valley



- CMA BOUNDARY
- ROADS**
 - Freeway
 - Highway
 - Main Road
 - Secondary Road
 - Local Road
 - 2WD (Unsealed)
- WATERCOURSES**
 - Major Watercourse
 - Minor Watercourse
- 1750 EVCs**
 - 68 Creekline Grassy Woodland
 - 22 Grassy Dry Forest
 - 641 Riparian Woodland
 - 164 Creekline Herb-rich Woodland
 - 67 Alluvial Terraces Herb-rich Woodland
 - 992 Water Body - Fresh
 - 125 Plains Grassy Wetland
 - 132 Plains Grassland
 - 897 Plains Grassland/Plains Grassy Woodland Mosaic
 - 55 Plains Grassy Woodland
 - 175 Grassy Woodland
 - 20 Heathy Dry Forest
 - 691 Aquatic Herland/Plains Sedge Wetland Mosaic
 - 647 Plains Sedge Wetland
 - 198 Sedge Riparian Woodland
 - 47 Valley Grassy Forest
- WATERBODIES**
 - Watercourse Area
 - Permanent Waterbody
 - Wetland Area
- BUILT UP AREAS**

Disclaimer: This map is a snapshot generated from Victorian Government data. This material may be of assistance to you but the State of Victoria does not guarantee that the publication is without flaw of any kind or is wholly appropriate for your particular purposes and therefore disclaims all liability for error, loss or damage which may arise from reliance upon it. All persons accessing this information should make appropriate enquiries to assess the currency of the data.